

Mask Usage in Florida Counties

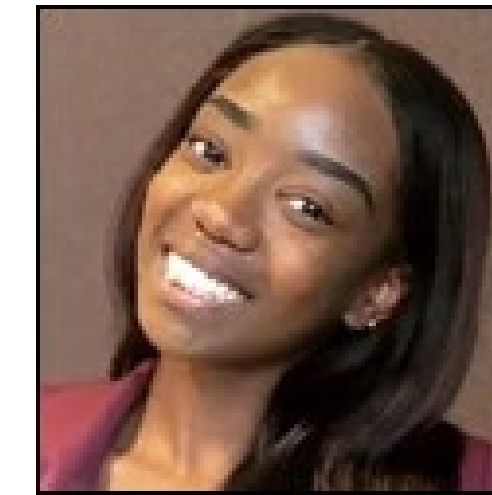
Trevian Lewis¹, Cherith Kay², Ayomide Olatunde¹, Jasmine Trapier², Mentor: Josselyn Salgado³
¹Mississippi Valley State University, ²Winston-Salem State University, ³College of Lake County



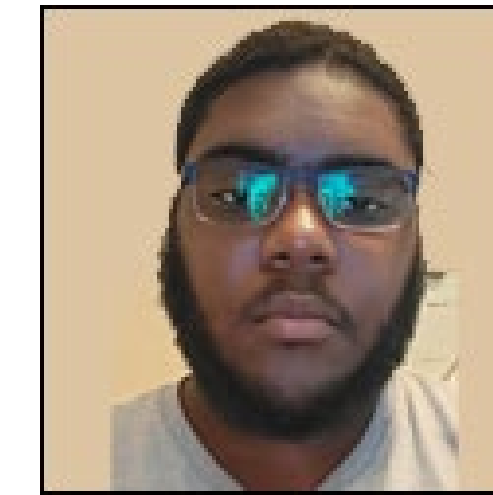
Introduction

Since the beginning of Covid, Florida was known to be one of the outlier states that were against masks. Citizens have felt like they have the option to wear masks even with a required mask mandate in place. Florida is also a popular state for travelling. Millions of people travel to Florida every year even regardless of the Covid circumstance. This information will help visitors and current residents know what precautions need to be taken in the state of Florida.

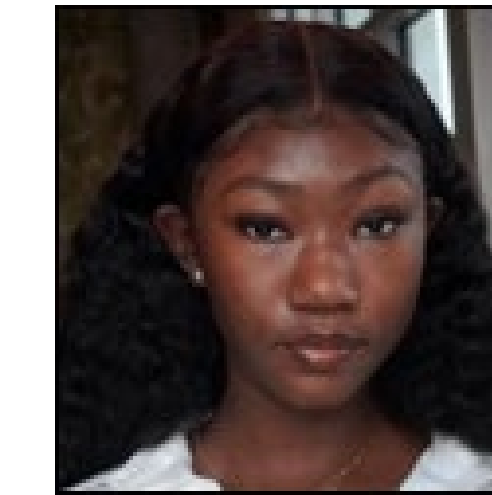
Team Members



Jasmine Trapier



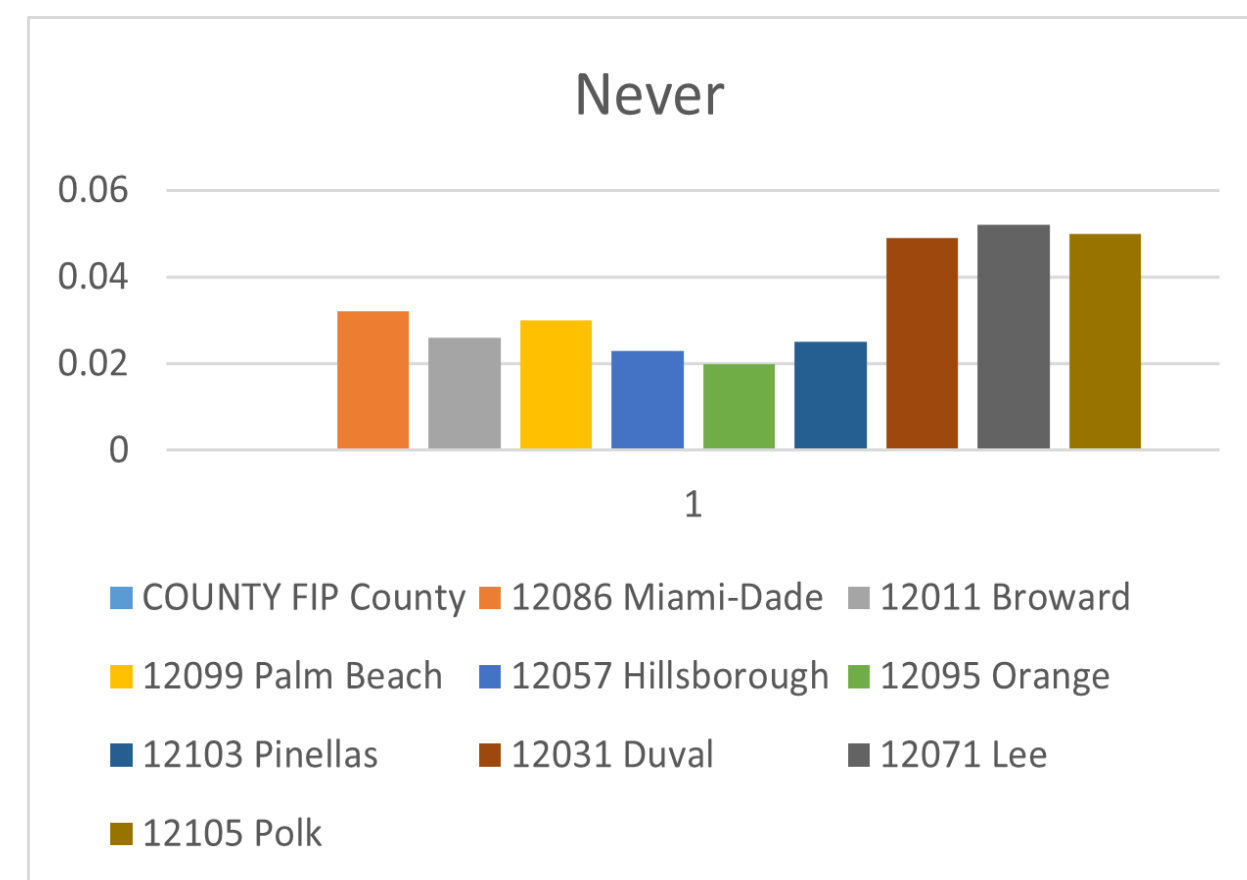
Trevian Lewis



Cherith Kay

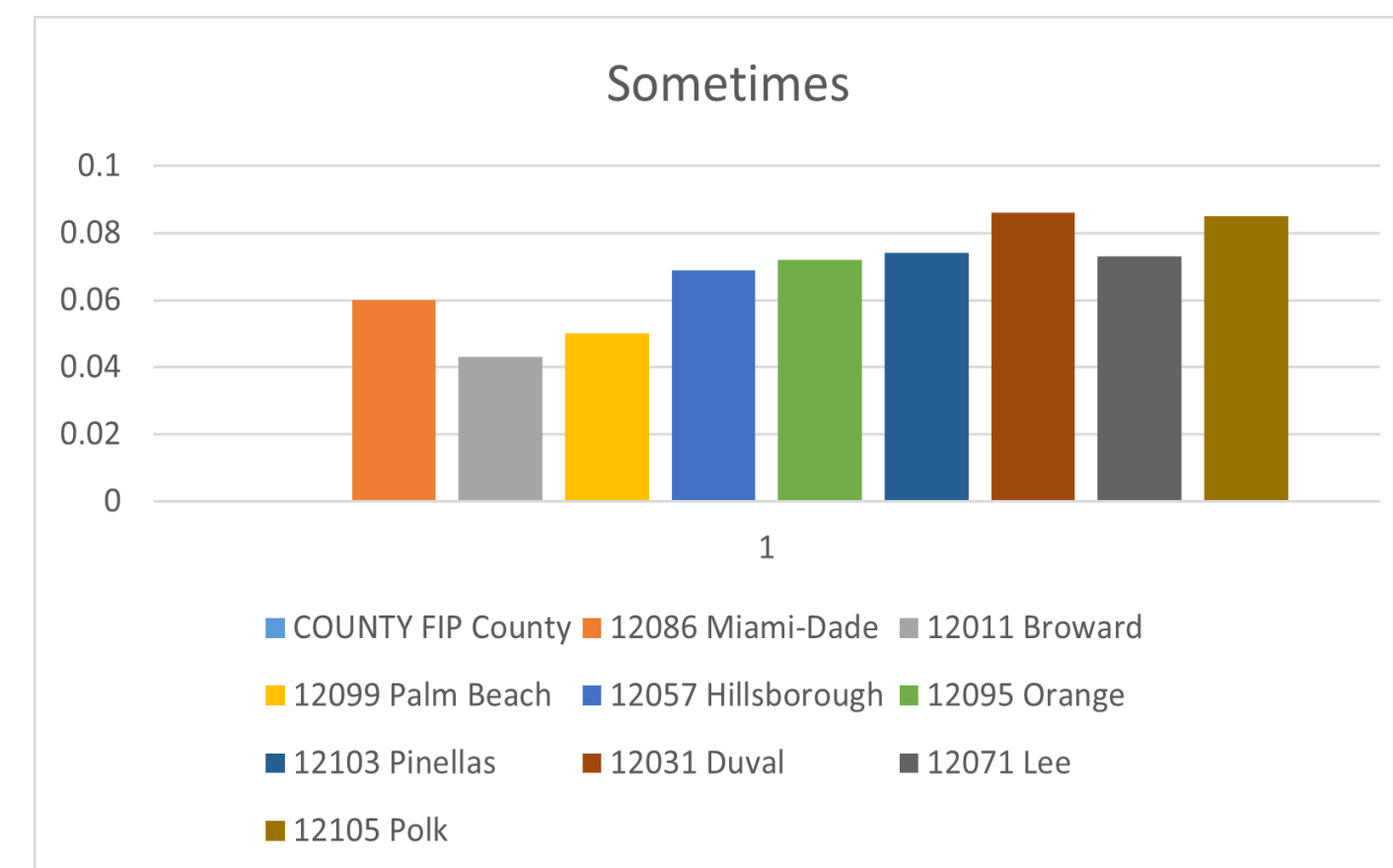


Ayomide Olatunde



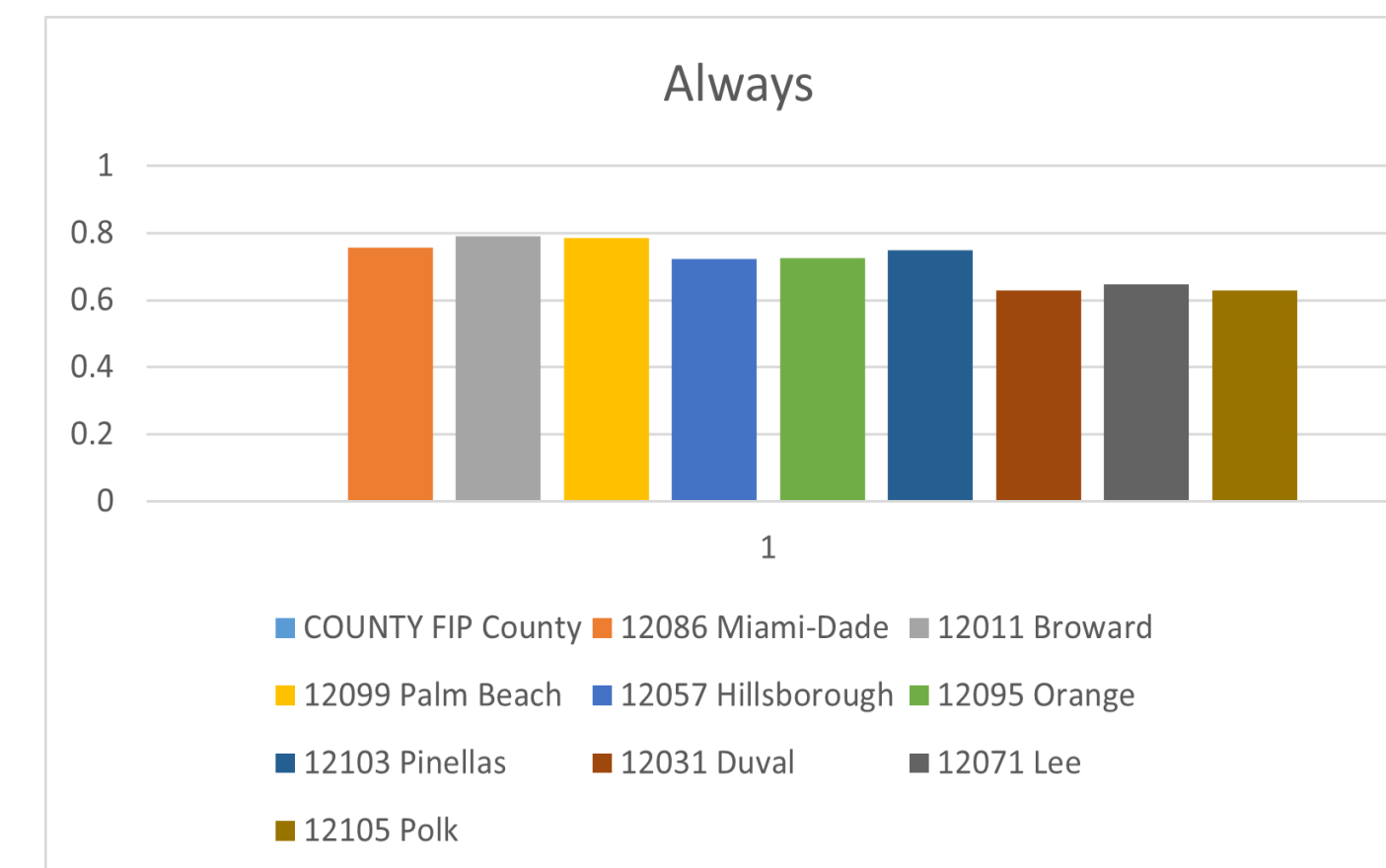
Never

Duval, Lee, and Polk County had the highest average of citizens not wearing a mask. Percentages were about .05%. For Duval County, that averages to about 468 people. For Lee County, that averages to about 368 people. For Polk County, that averages to about 343 people.



Sometimes

Duval and Polk County had the highest average of citizens that sometimes wear masks. This means that they do wear masks but not all of the time. Percentages were about .08%. For Duval County, that averages to about 748 people. For Polk County, that averages to about 548 people.



Always

Miami-Dade, Broward, and Palm Beach County had the highest average of citizens that always wear masks. Percentages were about .7%. For Miami-Dade County, that averages to about 18895 people. For Broward County, that averages to about 13483 people. For Palm Beach County, that averages to about 10255 people.



Resources

- [nytimes/covid-19-data: An ongoing repository of data on coronavirus cases and deaths in the US](#)
- [Open-Access Data and Computational Resources to Address COVID-19 | Data Science at NIH](#)
- [Welch Medical Library Guides: Finding Datasets for Secondary Analysis: COVID-19 Datasets](#)
- [Welch Medical Library Guides: Finding Datasets for Secondary Analysis: COVID-19 Datasets](#)

Acknowledgements

- Josselyn Salgado
- Dr. Linda Hayden
- Rick McMullen
- Mr. Bellton
- Dr. Marlon Pierce

